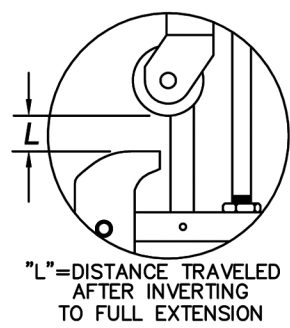
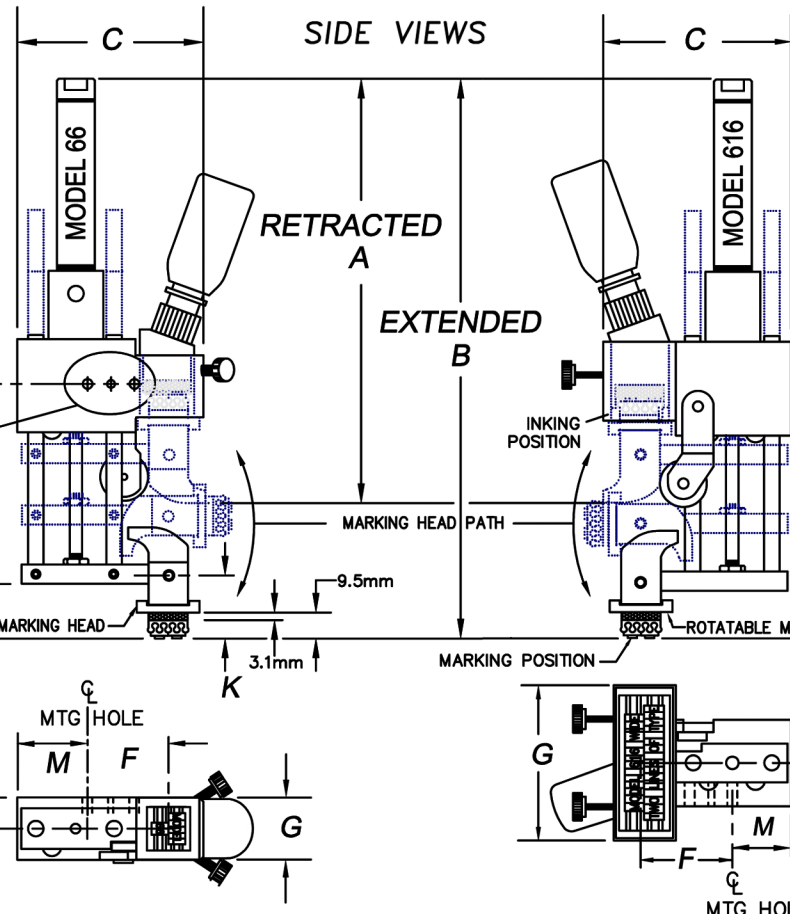
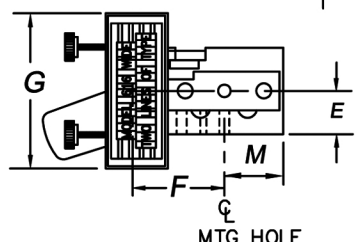
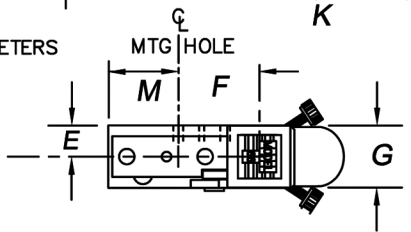


AIR CYLINDER PORTS ARE 10-32
 FACTORY ORDERED FLOW CONTROLS ACCOMMODATE EITHER 6mm OR 1/4" O.D. TUBE



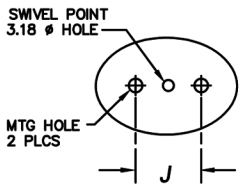
DIMENSIONS IN MILLIMETERS



DIMENSIONAL CHARACTERISTICS (IN MILLIMETERS)

MODEL	22	28	44	66	88	1010	416	616	816
LINES OF TYPE*	DOT MARKER	1	1	2	3	4	1	2	3
DIM.									
A	115.87	115.87	158.75	187.33	187.33	187.33	158.75	187.33	187.33
B	152.40	152.40**	212.73**	238.13	238.13	238.13	212.73**	238.13	238.13
C	50.80	50.80	60.33	76.20	84.15	90.47	60.33	76.20	85.73
D	68.25	68.25**	98.43**	101.60	101.60	101.60	98.43**	101.60	101.60
E	7.92	8.71	9.53	12.70	17.45	20.63	11.10	17.45	20.63
F	25.40	34.11	29.36	31.75	34.93	38.10	34.93	38.10	41.28
G	15.88	34.93	19.05	25.40	34.93	41.28	63.50	63.50	63.50
H	14.30	14.30**	17.45**	20.64	20.64	20.64	17.45**	20.64	20.64
K	18.26	18.26**	21.43**	24.60	24.60	24.60	21.43**	24.60	24.60
L	3.97	3.97	12.70	12.70	12.70	12.70	12.70	12.70	12.70
M	14.30	6.35	17.45	29.36	29.36	29.36	13.50	22.23	22.23

MODEL 66 & 616 SHOWN ABOVE FOR ILLUSTRATIVE PURPOSES



MODEL	DIM J	THREAD
22/28	17.46	6-40
44	19.05	10-32
66/88/1010	17.46	10-32
416/616/816	17.46	10-32

NOTE: ALL DIMENSIONS ARE NOMINAL AND SUBJECT TO STANDARD MANUFACTURING/ASSEMBLY TOLERANCES
 *ASSUMES TWO TIE KNOTS RUBBER TYPE UP TO 4.8 mm CHARACTER HEIGHT
 ** ASSUMES TYPE HOLDER / TYPE USED (NO RUBBER CUSHION)

NOTE: DUE TO WIDE WIDTH OF MODELS 416, 616, AND 816, MACHINES SHOULD BE ORDERED WITH RELATIVE POSITIONING BRACKET FOR LEFT-TO-RIGHT ADJUSTABILITY. MOUNTING THOSE MODELS WITHOUT THIS ADJUSTABILITY IS NOT RECOMMENDED.